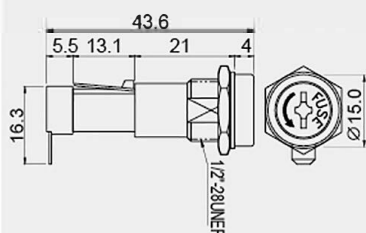


R3-9

cULus



⌀ (4.8mm) 0.187"
Quick connect

± 0.5~4.5mm MAX

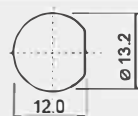
FEATURES:

- Material:
Frame and cap: PBT(UL flame: 94V-0).
Terminal: tin plated brass.
- Mounted by nut.
- Metal or plastic nut is optional.

CAP	FUSE	RATING
Bayonet type (tool release)	Ø6.35*30mm Ø6.35*31.8mm	15A 250V AC
Bayonet type (tool release)	Ø5.0*20mm	10A 250V AC
Screw type (tool release)	Ø6.35*30mm Ø6.35*31.8mm	15A 250V AC
Screw type (tool release)	Ø6.35*30mm Ø6.35*31.8mm	15A 250V AC

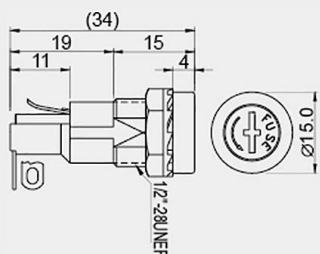


CUT-OUT



R3-11

cULus



⌀ (4.0mm) 0.156"
Solder

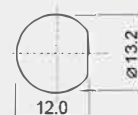
10A 250V AC
± 4.5mm MAX

FEATURES:

- Material:
Frame: phenolic(UL flame: 94V-1).
Cap: PBT(UL flame: 94V-0).
Terminal: nickel plated brass.
- Mounted by nut.
- Metal or plastic nut is optional.

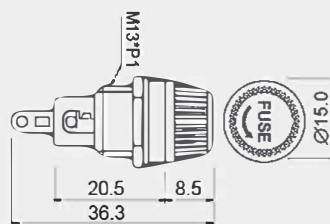
CAP	FUSE
Bayonet type (tool release)	Ø5.0*20mm
Screw type (tool release)	Ø5.0*20mm

CUT-OUT



R3-12

cULus



⌀ (4.0mm) 0.156"
Solder

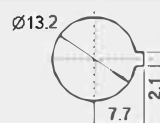
10A 250V AC
± 4.5mm MAX

FEATURES:

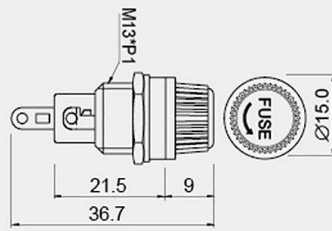
- Material:
Frame and cap: phenolic(UL flame: 94V-1).
Terminal: nickel plated brass.
- Mounted by nut.
- Metal or plastic nut is optional.

CAP	FUSE
Screw type	Ø5.0*20mm

CUT-OUT



R3-12E



⌋ (4.0mm)0.156"
Solder

10A 250V AC
⌋ 4.5mm MAX

FEATURES:

- Material:
Frame and cap: phenolic(UL flame: 94V-1).
Terminal: nickel plated brass.
- Mounted by nut.
- Metal or plastic nut is optional.

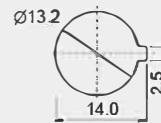
CAP

FUSE

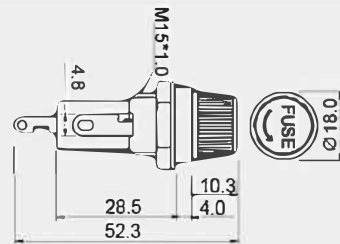
Screw type

Ø 5.0*20mm

CUT-OUT



R3-13



⌋ (4.2mm)0.163"
Solder

10A 250V AC
⌋ 0.5~4.5mm

⌋ (4.8mm)0.187"
Quick connect

FEATURES:

- Material:
Frame and cap: phenolic(UL flame: 94V-1).
Terminal: nickel plated brass.
- Mounted by nut.
- Metal or plastic nut is optional.

CAP

FUSE

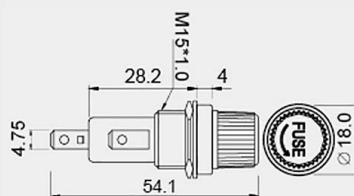
Screw type

Ø 6.35*30mm
Ø 6.35*31.8mm

CUT-OUT



R3-13E



⌋ (4.8mm)0.187"
Quick connect

10A 250V AC
⌋ 0.5~4.5mm

FEATURES:

- Material:
Frame and cap: phenolic(UL flame: 94V-1).
Terminal: nickel plated brass.
- Mounted by nut.
- Metal or plastic nut is optional.

CAP

FUSE

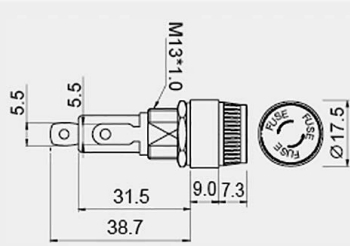
Screw type

Ø 6.35*30mm
Ø 6.35*31.8mm

CUT-OUT



R3-14A



2

CAP	FUSE	RATING
Bayonet type	\varnothing 6.35*30mm \varnothing 6.35*31.8mm	10A 250V AC
Bayonet type	\varnothing 6.35*30mm \varnothing 6.35*31.8mm	30A 250V AC



(5.5mm)0.230"
Solder

\varnothing 0.5~6.5mm

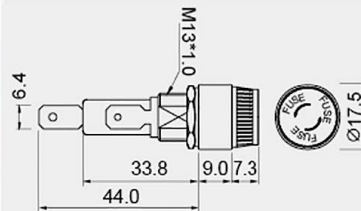
FEATURES:

- Material:
Frame and cap: phenolic(UL flame: 94V-1).
Terminal: tin plated brass, for R3-14A.
Terminal: tin plated copper, for R3-14A2.
- Mounted by nut.

CUT-OUT

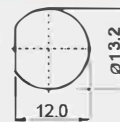


R3-14C



CAP	FUSE
Bayonet type	\varnothing 6.35*30mm \varnothing 6.35*31.8mm

CUT-OUT



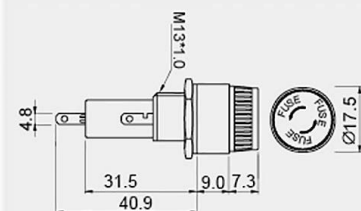
(6.4mm)0.250"
Quick connect

10A 250V AC
 \varnothing 0.5~6.5 mm

FEATURES:

- Material:
Frame and cap: phenolic(UL flame: 94V-1).
Terminal: tin plated brass.
- Mounted by nut.

R3-14D



CAP	FUSE
Bayonet type	\varnothing 6.35*30mm \varnothing 6.35*31.8mm

CUT-OUT



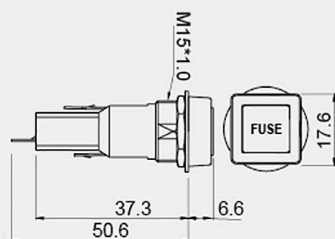
(4.8mm)0.187"
Quick connect

10A 250V AC
 \varnothing 0.5~6.5mm

FEATURES:

- Material:
Frame and cap: phenolic(UL flame: 94V-1).
Terminal: nickel plated brass.
- Mounted by nut.

R3-21A



(3.8mm)0.148"
Solder

10A 250V AC
 $\varnothing_{\pm 0.5}^{+0.5}$ 0.5~4.5mm

FEATURES:

- Material:
Frame : phenolic(UL flame: 94V-1).
Cap : nylon(UL flame: 94V-2).
Terminal: nickel plated brass.
- Mounted by nut.

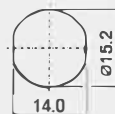
CAP

FUSE

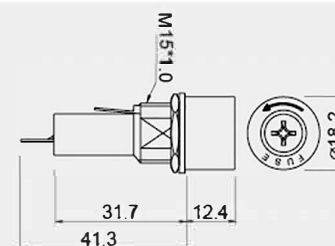
Bayonet type

\varnothing 6.35*30mm

CUT-OUT



R3-22A



(4.8mm)0.187"
Quick connect

10A 250V AC
 $\varnothing_{\pm 0.5}^{+0.5}$ 0.5~5mm

FEATURES:

- Material:
Frame and cap: phenolic(UL flame: 94V-1).
Terminal: nickel plated brass.
- Mounted by nut.
- Metal or plastic nut is optional.

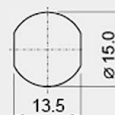
CAP

FUSE

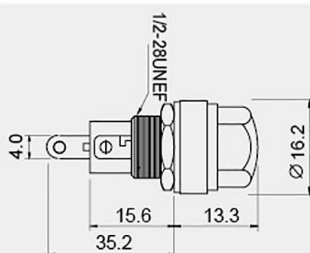
Screw type
(tool release)

\varnothing 6.35*30mm
 \varnothing 6.35*31.8mm

CUT-OUT



R3-26



(4.0mm)0.156"
Solder

10A 250V AC
 $\varnothing_{\pm 0.5}^{+0.5}$ 0.5~ 4.5mm

FEATURES:

- Material:
Frame and cap: phenolic(UL flame: 94V-1).
Terminal: nickel plated brass.
- Mounted by nut.

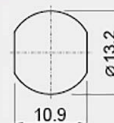
CAP

FUSE

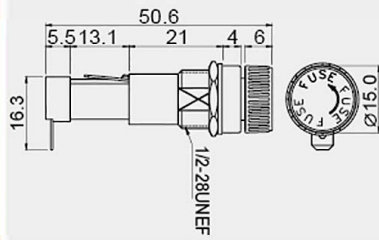
Screw type

\varnothing 5.0*20mm

CUT-OUT



R3-28A



⌋ (4.8mm)0.187"
Quick connect

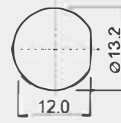
15A 250V AC
± 4.5mm MAX

FEATURES:

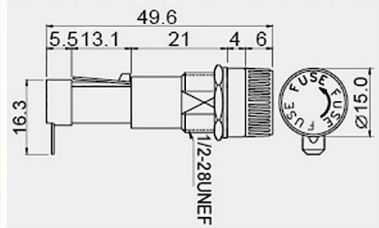
- Material:
Frame and cap: PBT(UL flame: 94V-0).
Terminal: tin plated brass.
- Mounted by nut.

CAP	FUSE
Bayonet type	\varnothing 6.35*30mm \varnothing 6.35*31.8mm

CUT-OUT



R3-28C



⌋ (4.8mm)0.187"
Quick connect

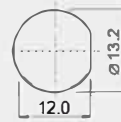
15A 250V AC
± 4.5mm MAX

FEATURES:

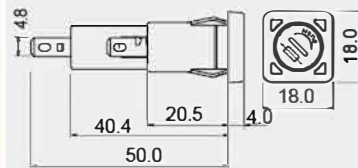
- Material:
Frame and cap: PBT(UL flame: 94V-0).
Terminal: tin plated brass.
- Mounted by nut.

CAP	FUSE
Screw type	\varnothing 6.35*30mm \varnothing 6.35*31.8mm

CUT-OUT



R3-38



⌋ (4.8mm)0.187"
Quick connect

10A 250V AC
± 0.7~2.5mm

FEATURES:

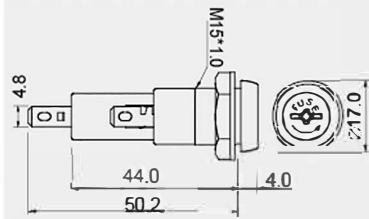
- Material:
Body: n ybn(UL flame: 94V-2).
Cap: PBT(UL flame: 94V-0).
Terminal: tin plated brass.
- Snap-in mounting, easy to install fuse holder into panel.

CAP	FUSE
Bayonet type (tool release)	\varnothing 6.35*30 mm \varnothing 6.35*31.8 mm

CUT-OUT



R3-44 A



⌋ (4.8mm)0.187"
Quick connect

15A 250V AC
⌀ 0.5~4.0mm

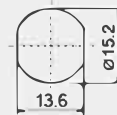
FEATURES:

- Material:
Frame: phenolic(UL flame: 94V-1).
Cap: PBT(UL flame: 94V-0).
Terminal: tin plated brass.
- Mounted by nut.
- Metal or plastic nut is optional.

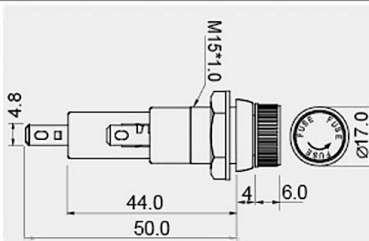
	CAP	FUSE	
A	Bayonet type (tool release)		<ul style="list-style-type: none"> Ø 6.35*30mm Ø 6.35*31.8mm
B	Bayonet type (tool release)		<ul style="list-style-type: none"> Ø 5.0*20mm
C	Screw type (tool release)		<ul style="list-style-type: none"> Ø 6.35*30mm Ø 6.35*31.8mm



CUT-OUT



R3-46 A



⌋ (4.8mm)0.187"
Quick connect

15A 250V AC
⌀ 0.5~4.5mm

FEATURES:

- Material:
Frame: phenolic(UL flame: 94V-1).
Cap: PBT(UL flame: 94V-0).
Terminal: tin plated brass.
- Mounted by nut.
- Metal or plastic nut is optional.

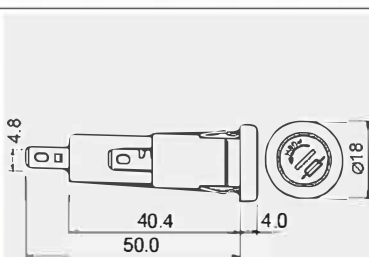
	CAP	FUSE	
A	Bayonet type		<ul style="list-style-type: none"> Ø 6.35*30mm Ø 6.35*31.8mm
B	Bayonet type		<ul style="list-style-type: none"> Ø 5.0*20mm
C	Screw type		<ul style="list-style-type: none"> Ø 6.35*30mm Ø 6.35*31.8mm



CUT-OUT



R3-49



⌋ (4.8mm)0.187"
Quick connect

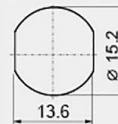
10A 250V AC
⌀ 0.7~2.5mm

FEATURES:

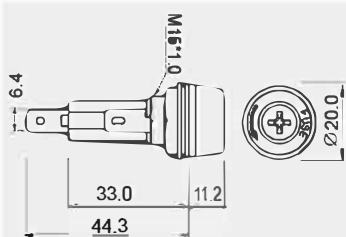
- Material:
Frame: nylon(UL flame: 94V-2).
Cap: PBT(UL flame: 94V-0).
Terminal: tin plated brass.
- Snap-in mounting, easy to install fuse holder into panel.

	CAP	FUSE	
A	Bayonet type (tool release)		<ul style="list-style-type: none"> Ø 6.35*30mm Ø 6.35*31.8mm
C	Screw type (tool release)		<ul style="list-style-type: none"> Ø 6.35*30mm Ø 6.35*31.8mm

CUT-OUT



R3-53AA



\top (6.4mm)0.250"
Quick connect

15A 250V AC
 \pm 0.5~3.0mm

FEATURES:

- Material:
Frame and cap: phenolic(UL flame: 94V-1).
Terminal: nickel plated copper.
- Mounted by nut.

CAP

Screw type
(tool release)

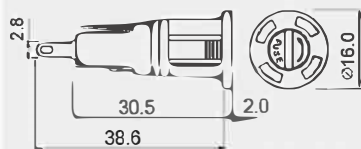
FUSE

\varnothing 6.35*30mm
 \varnothing 6.35*31.8mm

CUT-OUT



R3-54



\top (2.8mm)0.109"
Solder

10A 125V AC/6.3A 250V AC
 \pm 0.75~3.5mm

FEATURES:

- Material:
Frame and cap: nylon(UL flame: 94V-2).
Terminal: silver plated copper.
- Snap-in mounting, easy to install fuse holder into panel.

CAP

Screw type
(tool release)

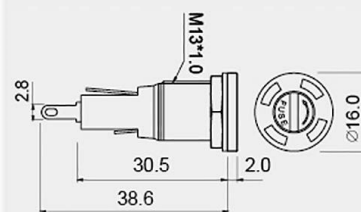
FUSE

\varnothing 5.0*20mm

CUT-OUT



R3-54B



\top (2.8mm)0.109"
Solder

10A 125V AC/6.3A 250V AC
 \pm 0.7~3.5mm

FEATURES:

- Material:
Frame and cap: nylon(UL flame: 94V-2).
Terminal: silver plated copper.
- Mounted by nut.

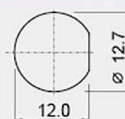
CAP

Screw type
(tool release)

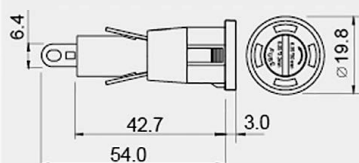
FUSE

\varnothing 5.0*20mm

CUT-OUT



R3-55A



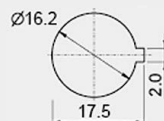
(6.4mm)0.250" 20A 250V AC
 Solder $\pm 0.75 \sim 3.5\text{mm}$

FEATURES:

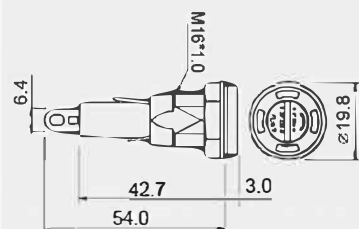
- Material:
 Frame and cap: nylon (UL flame: 94V-2).
 Terminal: silver plated copper.
- Snap-in mounting, easy to install fuse holder into panel.

CAP	FUSE
Screw type (tool release)	$\varnothing 6.35 \times 30\text{mm}$ $\varnothing 6.35 \times 31.8\text{mm}$

CUT-OUT



R3-55B



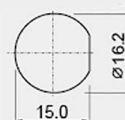
(6.4mm)0.250" 20A 250V AC
 Solder $\pm 0.5 \sim 7.0\text{mm}$

FEATURES:

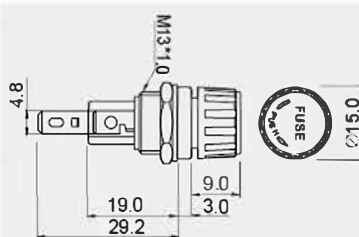
- Material:
 Frame and cap: nylon (UL flame: 94V-2).
 Terminal: silver plated copper.
- Mounted by nut.

CAP	FUSE
Screw type (tool release)	$\varnothing 6.35 \times 30\text{mm}$ $\varnothing 6.35 \times 31.8\text{mm}$

CUT-OUT



R3-57



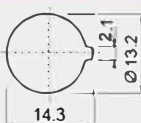
(4.8mm)0.187" 10A 250V AC
 Quick connect $\pm 0.5 \sim 5.0\text{mm}$

FEATURES:

- Material:
 Body and cap: phenolic (UL flame: 94V-1).
 Terminal: nickel plated brass.
- Mounted by nut.

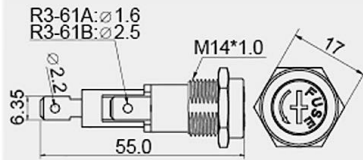
CAP	FUSE
Bayonet type	$\varnothing 5.0 \times 20\text{mm}$

CUT-OUT



R3-61

IP56



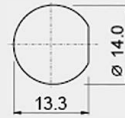
A
B

TERMINAL HOLE	CAP
$\varnothing 1.6$ mm	Screw type
$\varnothing 2.5$ mm	(tool release)

FUSE

$\varnothing 6.35 \times 30$ mm
 $\varnothing 6.35 \times 31.8$ mm

CUT-OUT



(6.4mm)0.250" Quick connect

10A 250V AC

FEATURES:

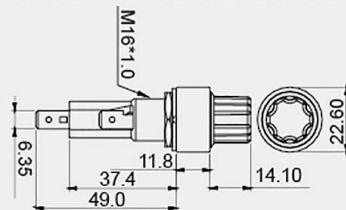
- Material:
Frame: PC (UL flame: 94V-2).
Cap: PBT (UL flame: 94V-0).
Terminal: nickel plated brass.
- Mounted by nut.

R3-63B-01-1

Waterproof / LED Warning Light

UL US

PATENT
IP66



INDICATOR LIGHT

LED

RATING

5 20A 250V AC

CAP

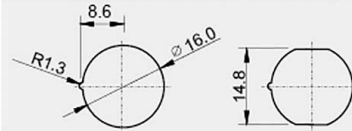
Screw type

FUSE

$\varnothing 6.35 \times 30$ mm

$\varnothing 6.35 \times 31.8$ mm

CUT-OUT



(6.4mm)0.250" Quick connect

20A 250V AC

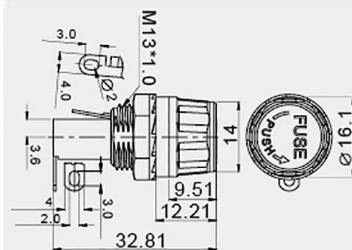
$\varnothing 0.5 \sim 10.0$ mm

FEATURES:

- Material:
Frame: phenolic (UL flame: 94V-1).
Cap: PC (UL flame: 94V-2).
Terminal: silver plated copper.
- LED indicates when fuse is broken.
- Mounted by nut.

R3-78

UL US



CAP

Bayonet type

FUSE

$\varnothing 5 \times 20$ mm

CUT-OUT



(4.0mm)0.156" Solder

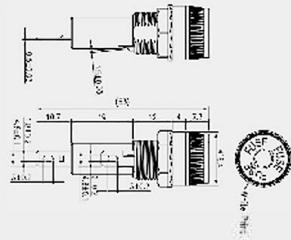
10A 250V AC

$\varnothing 0.5 \sim 4.5$ mm

FEATURES:

- Material:
Frame: phenolic (UL flame: 94V-0).
Top cover: ABS (UL flame: 94V-HB).
Cap: PBT (UL flame: 94V-0).
Terminal: tin plated brass.
- Mounted by nut.
- Color caps are optional and replaceable.

R3-93

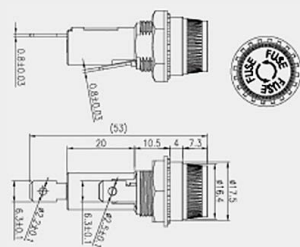


□ (4.8mm) 0.187"
Quick connect

10A 250V AC
□ 0.5~7.0mm

CAP	FUSE
Bayonet type	\varnothing 6.35*30mm \varnothing 6.35*31.8mm
FEATURES:	CUT-OUT
<ul style="list-style-type: none"> Material: <ul style="list-style-type: none"> Housing: PBT (UL flame: 94V-0). Cap: Phenolic (UL flame: 94V-1). Terminal: tin plated brass. Mounted by nut. 	

R3-107



□ 0.250" SQ
 \varnothing 13.4

20A 250V AC
□ 0.5~3.0mm max

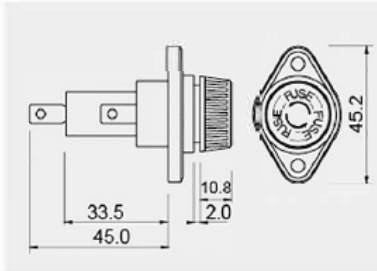
FUSE
\varnothing 6.35*30mm \varnothing 6.35*31.8mm

FEATURES:
• Mounted by nut.

Heavy Duty

R3-18

Heavy Duty



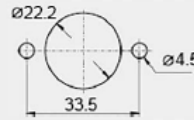
(6.4mm)0.250" 30A 600V AC
Quick connect \varnothing 0.5~10mm

FEATURES:

- Material:
Frame and cap: phenolic(UL flame: 94V-1).
Terminal: nickel plated brass.
- Mounted by screws.

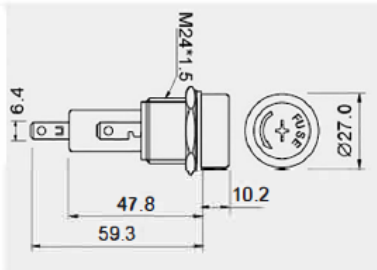
CAP	FUSE
Bayonet type	\varnothing 10.3*38.1mm

CUT-OUT



R3-41

Heavy Duty



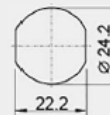
(6.4mm)0.250" 30A 600V AC
Quick connect \varnothing 0.5~15.5mm

FEATURES:

- Material:
Frame and cap: phenolic(UL flame: 94V-1).
Terminal: tin plated copper.
- Mounted by nut.

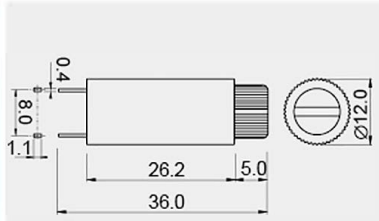
CAP	FUSE
Screw type (tool release)	\varnothing 10.3*38.1mm

CUT-OUT



R3-24

PCB Mount



⌋ (1.1mm)0.428"
PC

10A 250V AC
±0.5~4mm

FEATURES:

- Material:
 - Frame: phenolic(UL flame: 94V-1).
 - Cap: PBT(UL flame: 94V-0).
 - Terminal: nickel plated brass.
- PC terminal mounted.

CAP

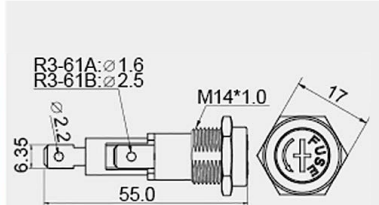
Bayonet type

FUSE

∅ 5.0*20 mm

DC Rating

R3-61



⌋ (6.4mm)0.250"
Quick connect

10A 12V DC

FEATURES:

- Material:
 - Frame: PC (UL flame: 94V-2).
 - Cap: PBT (UL flame: 94V-0).
 - Terminal: nickel plated brass.
- Mounted by nut.

A
B

TERMINAL HOLE

∅ 1.6 mm

∅ 2.5 mm

CAP

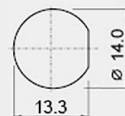
Screw type
(tool release)

FUSE

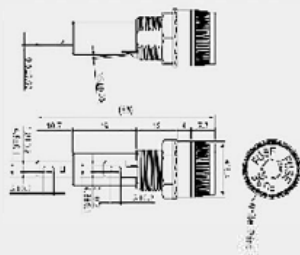
∅ 6.35*30mm

∅ 6.35*31.8mm

CUT-OUT



R3-93



⌋ (4.8mm)0.187"
Quick connect

10A 12V DC
±0.5~7.0mm

CAP

Bayonet type

FUSE

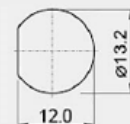
∅ 6.35*30mm

∅ 6.35*31.8mm

FEATURES:

- Material:
 - Housing: PBT(UL flame: 94V-0).
 - Cap: Phenolic(UL flame: 94V-1).
 - Terminal: tin plated brass.
- Mounted by nut.

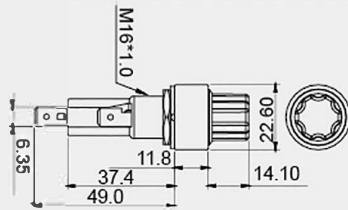
CUT-OUT



R3-63B-01-1

Waterproof / LED Warning Light

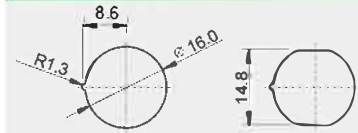
CE US



INDICATOR LIGHT	RATING
L LED	2 20A 32V DC
CAP	FUSE
Screw type	\varnothing 6.35*30mm \varnothing 6.35*31.8mm

(6.4mm)0.250" 20A 32V DC
Quick connect 0.5~10.0mm

CUT-OUT

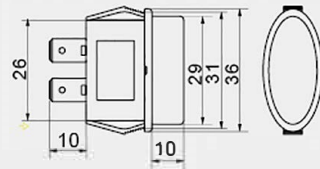


FEATURES:

- Material:
Frame: phenolic(UL flame: 94V-1).
Cap: PC(UL flame: 94V-2).
Terminal: silver plated copper.
- LED indicates when fuse is broken.
- Mounted by nut.
- Waterproof.

R3-67

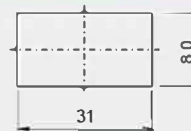
Heavy Duty



INDICATOR LIGHT	FUSE
W/O LED	ATO BLADE FUSE
L With LED	MTA FUSE

(6.4mm)0.250" 30A 12/24V DC
Quick connect 0.5~7.0mm

CUT-OUT



FEATURES:

- Material:
Frame: nylon(UL flame: 94V-2).
Cap: PC(UL flame: 94V-2).
Terminal: tin plated brass.
- LED indicates when fuse is broken.
- Snap-in mounting, easy to install fuse holder into panel.